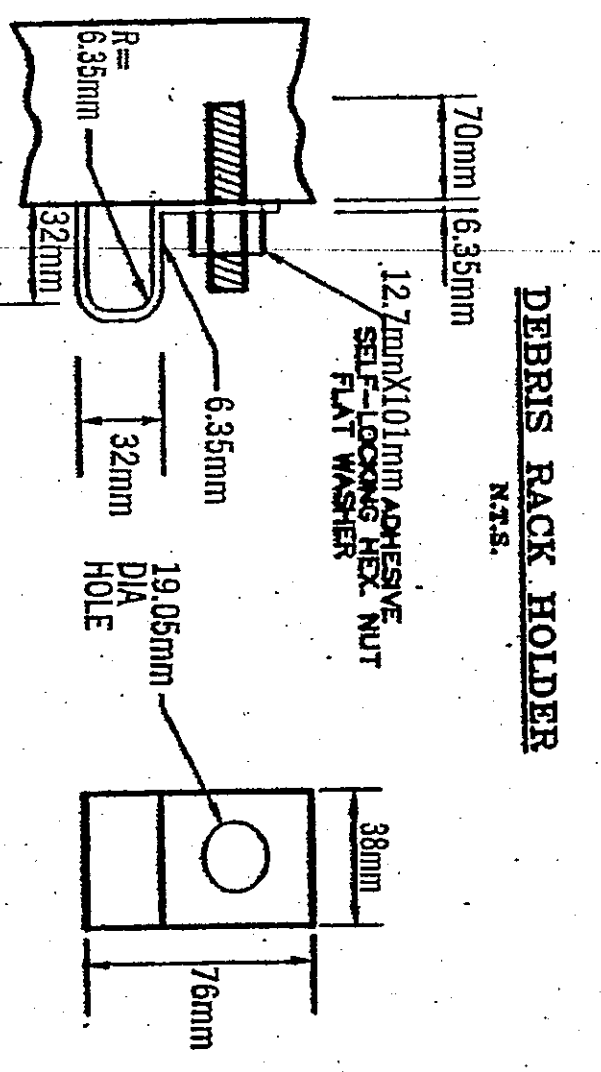
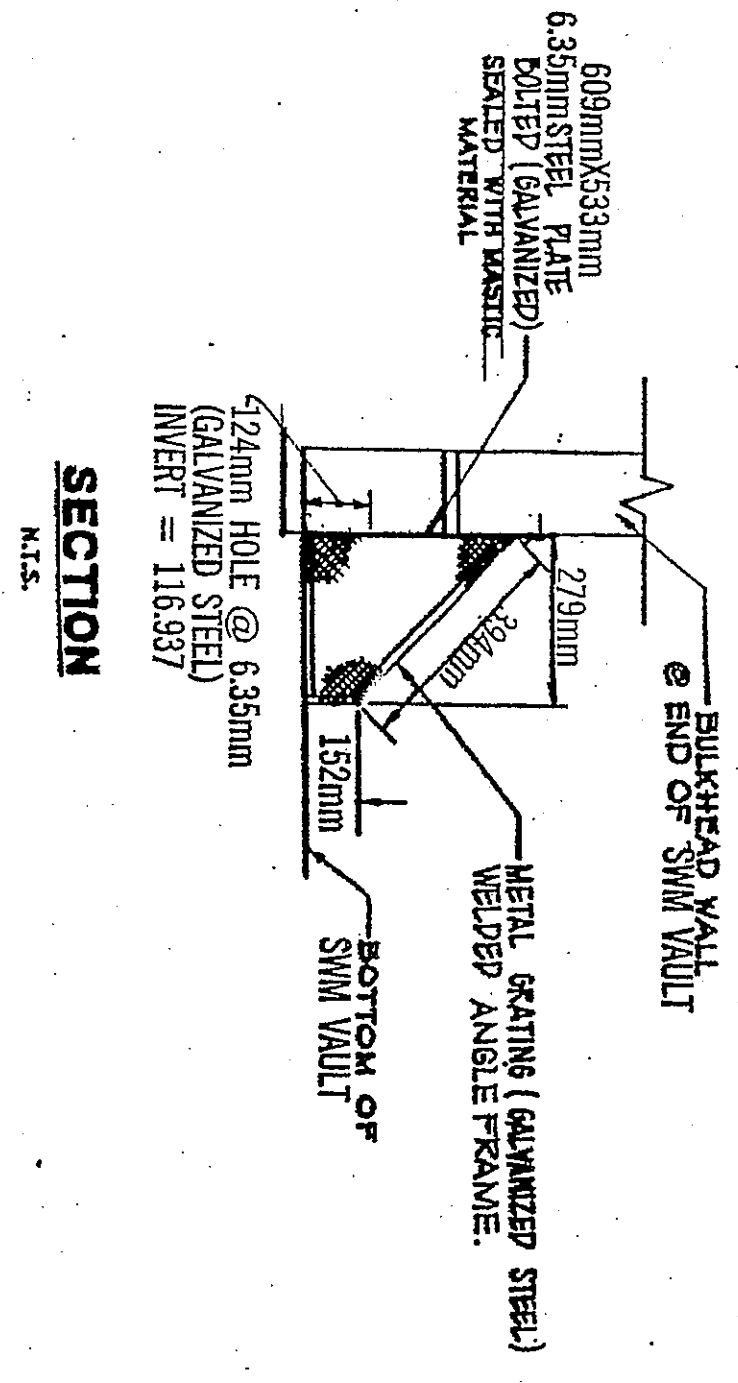
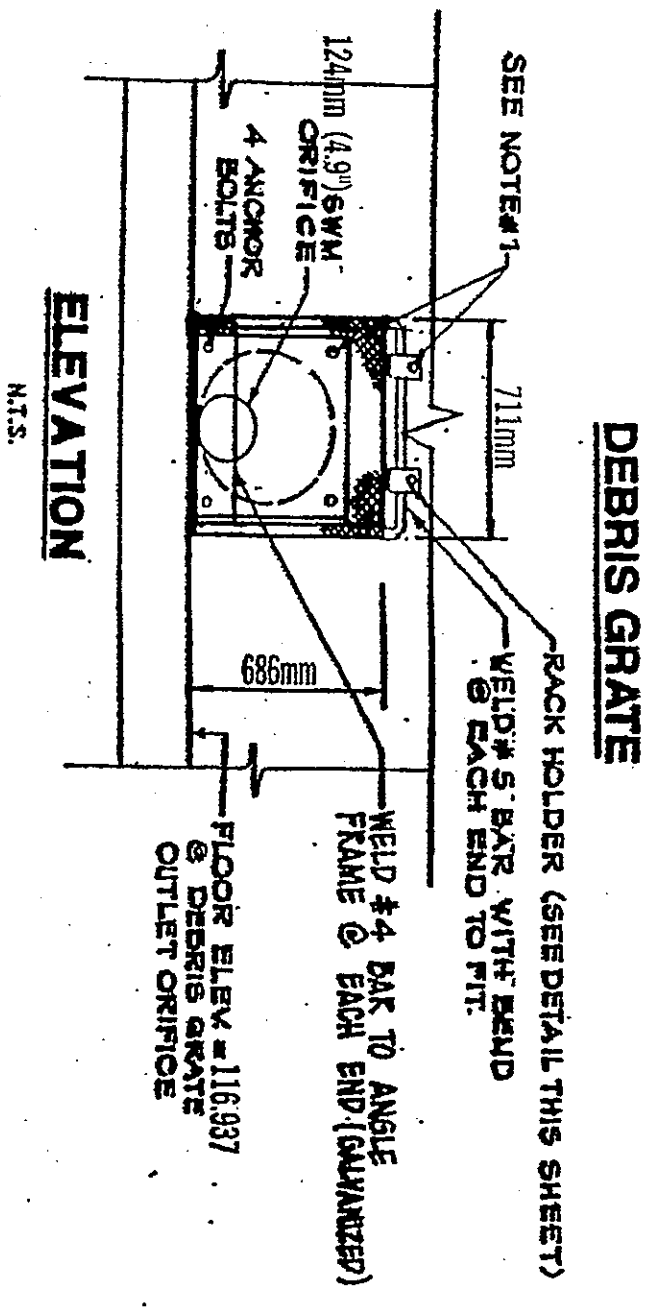
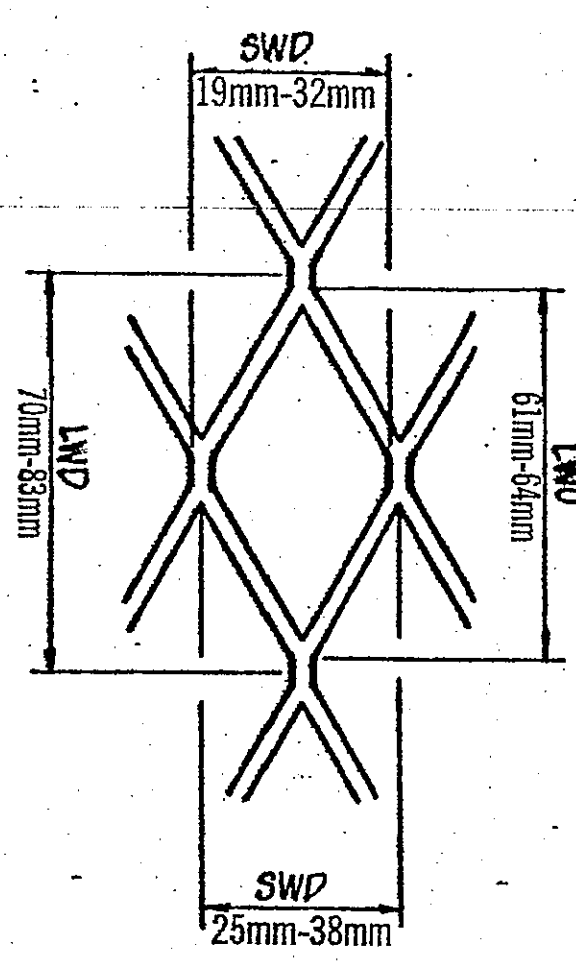


GRATE DETAIL
WEIGHT = 2.25 - 2.75 #/SQ.FT.



GRATE DETAIL
DEBRIS GRATE

1. 12mm x 10mm adhesive seal shall be stainless steel anchor bolts. USE NOT NTK. BOLT II APPROVED EQUAL ANCHOR BOLTS SHALL BE EMBEDDED A MINIMUM OF 12" INTO AND SHALL HAVE A MINIMUM EDGE DISTANCE FROM CONCRETE FACE TO CENTER OF ANCHOR BOLT OF 12".
2. TRASH RACK SHALL BE GALVANIZED AFTER FABRICATION OR BE GALVANIZED AFTER WELDING HAVE BEEN MADE.
3. THE TRASH RACK SHALL BE SHIPPED TO KEET FLUSH.



TR-20 POND ROUTING

*****80-80 LIST OF INPUT DATA FOR TR-20 HYDROLOGY*****

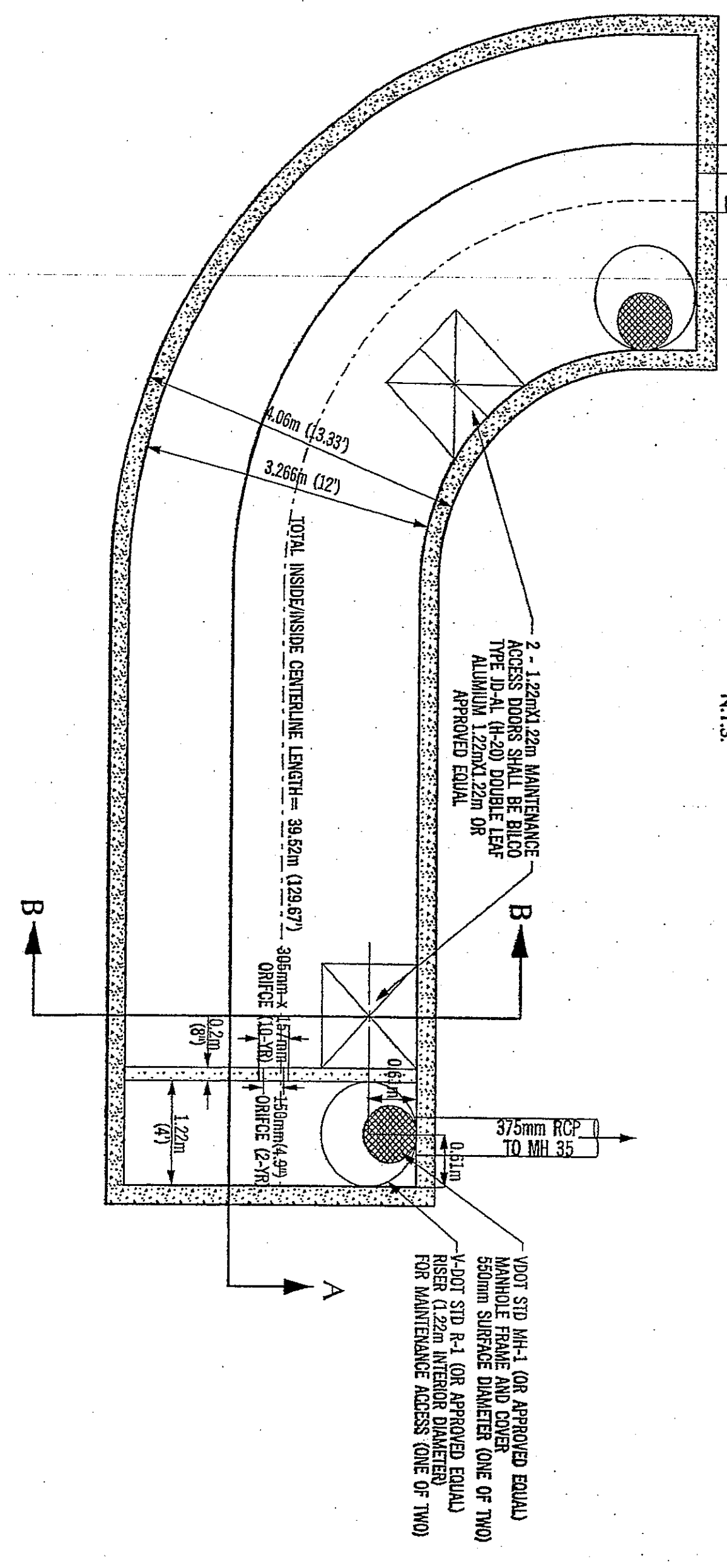
NO. TR-20 TITLE	UNIT	Value	NO. TR-20 TITLE	UNIT	Value
1	Flow	0.00	10	Flow	10
2	Flow	0.00	11	Flow	20
3	Flow	0.00	12	Flow	30
4	Flow	0.00	13	Flow	40
5	Flow	0.00	14	Flow	50
6	Flow	0.00	15	Flow	60
7	Flow	0.00	16	Flow	70
8	Flow	0.00	17	Flow	80
9	Flow	0.00	18	Flow	100

*****END OF 80-80 LIST*****

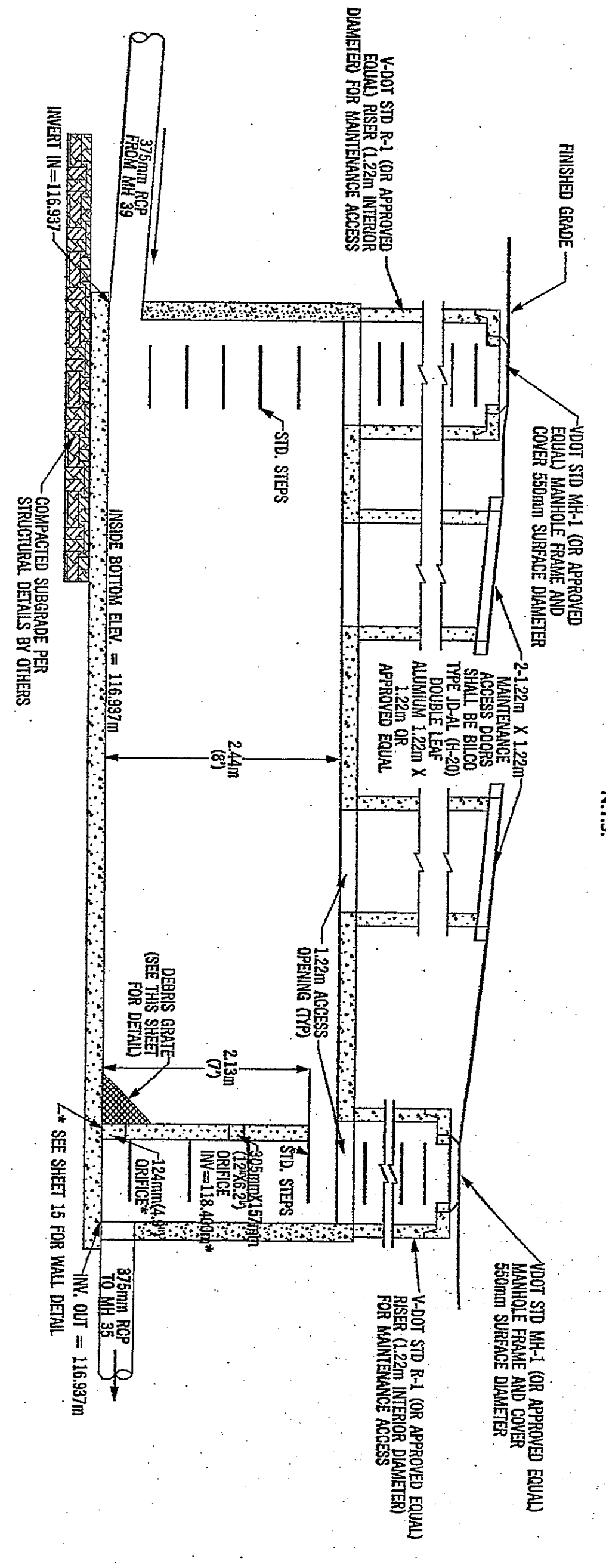
SUMMARY TABLE 1 - SELECTED RESULTS OF STANDARD AND REGIME CONTROL INSTRUCTIONS IN THE ORDER PERFORMED (A CHECK MARK IN THE PEAK DISCHARGE TIME AND RATE (GRS) VALUES INDICATES A PEAK FOR HYDROGRAPH)

SECTION/ STRUCTURE ID	STANDARD OPERATION	RAIN ANTICIPATION	MAN INCHES	PRECIPITATION	RUNOFF	ELEVATION	PEAK DISCHARGE	PEAK DISCHARGE
		#	(IN)	(IN)	(CFS)	(FT)	(CFS)	(CSM)
ALTERNATE 1	STORM	10 YEAR STORM	1.0	5.20	24.00	2.33	8.53	2081.4
SECTION 1	RUNOFF	1	1.0	5.20	24.00	2.33	8.53	2081.4
SECTION 2	RUNOFF	2	1.0	5.20	24.00	2.33	8.53	2081.4
SECTION 3	RUNOFF	3	1.0	5.20	24.00	2.33	8.53	2081.4
SECTION 4	RUNOFF	4	1.0	5.20	24.00	2.33	8.53	2081.4
SECTION 5	RUNOFF	5	1.0	5.20	24.00	2.33	8.53	2081.4
SECTION 6	RUNOFF	6	1.0	5.20	24.00	2.33	8.53	2081.4
SECTION 7	RUNOFF	7	1.0	5.20	24.00	2.33	8.53	2081.4
SECTION 8	RUNOFF	8	1.0	5.20	24.00	2.33	8.53	2081.4
SECTION 9	RUNOFF	9	1.0	5.20	24.00	2.33	8.53	2081.4
SECTION 10	RUNOFF	10	1.0	5.20	24.00	2.33	8.53	2081.4
SECTION 11	RUNOFF	11	1.0	5.20	24.00	2.33	8.53	2081.4
SECTION 12	RUNOFF	12	1.0	5.20	24.00	2.33	8.53	2081.4
SECTION 13	RUNOFF	13	1.0	5.20	24.00	2.33	8.53	2081.4
SECTION 14	RUNOFF	14	1.0	5.20	24.00	2.33	8.53	2081.4
SECTION 15	RUNOFF	15	1.0	5.20	24.00	2.33	8.53	2081.4
SECTION 16	RUNOFF	16	1.0	5.20	24.00	2.33	8.53	2081.4
SECTION 17	RUNOFF	17	1.0	5.20	24.00	2.33	8.53	2081.4
SECTION 18	RUNOFF	18	1.0	5.20	24.00	2.33	8.53	2081.4
SECTION 19	RUNOFF	19	1.0	5.20	24.00	2.33	8.53	2081.4
SECTION 20	RUNOFF	20	1.0	5.20	24.00	2.33	8.53	2081.4
SECTION 21	RUNOFF	21	1.0	5.20	24.00	2.33	8.53	2081.4
SECTION 22	RUNOFF	22	1.0	5.20	24.00	2.33	8.53	2081.4
SECTION 23	RUNOFF	23	1.0	5.20	24.00	2.33	8.53	2081.4
SECTION 24	RUNOFF	24	1.0	5.20	24.00	2.33	8.53	2081.4
SECTION 25	RUNOFF	25	1.0	5.20	24.00	2.33	8.53	2081.4
SECTION 26	RUNOFF	26	1.0	5.20	24.00	2.33	8.53	2081.4
SECTION 27	RUNOFF	27	1.0	5.20	24.00	2.33	8.53	2081.4
SECTION 28	RUNOFF	28	1.0	5.20	24.00	2.33	8.53	2081.4
SECTION 29	RUNOFF	29	1.0	5.20	24.00	2.33	8.53	2081.4
SECTION 30	RUNOFF	30	1.0	5.20	24.00	2.33	8.53	2081.4
SECTION 31	RUNOFF	31	1.0	5.20	24.00	2.33	8.53	2081.4
SECTION 32	RUNOFF	32	1.0	5.20	24.00	2.33	8.53	2081.4
SECTION 33	RUNOFF	33	1.0	5.20	24.00	2.33	8.53	2081.4
SECTION 34	RUNOFF	34	1.0	5.20	24.00	2.33	8.53	2081.4
SECTION 35	RUNOFF	35	1.0	5.20	24.00	2.33	8.53	2081.4
SECTION 36	RUNOFF	36	1.0	5.20	24.00	2.33	8.53	2081.4
SECTION 37	RUNOFF	37	1.0	5.20	24.00	2.33	8.53	2081.4
SECTION 38	RUNOFF	38	1.0	5.20	24.00	2.33	8.53	2081.4
SECTION 39	RUNOFF	39	1.0	5.20	24.00	2.33	8.53	2081.4
SECTION 40	RUNOFF	40	1.0	5.20	24.00	2.33	8.53	2081.4
SECTION 41	RUNOFF	41	1.0	5.20	24.00	2.33	8.53	2081.4
SECTION 42	RUNOFF	42	1.0	5.20	24.00	2.33	8.53	2081.4
SECTION 43	RUNOFF	43	1.0	5.20	24.00	2.33	8.53	2081.4
SECTION 44	RUNOFF	44	1.0	5.20	24.00	2.33	8.53	2081.4
SECTION 45	RUNOFF	45	1.0	5.20	24.00	2.33	8.53	2081.4
SECTION 46	RUNOFF	46	1.0	5.20	24.00	2.33	8.53	2081.4
SECTION 47	RUNOFF	47	1.0	5.20	24.00	2.33	8.53	2081.4
SECTION 48	RUNOFF	48	1.0	5.20	24.00	2.33	8.53	2081.4
SECTION 49	RUNOFF	49	1.0	5.20	24.00	2.33	8.53	2081.4
SECTION 50	RUNOFF	50	1.0	5.20	24.00	2.33	8.53	2081.4

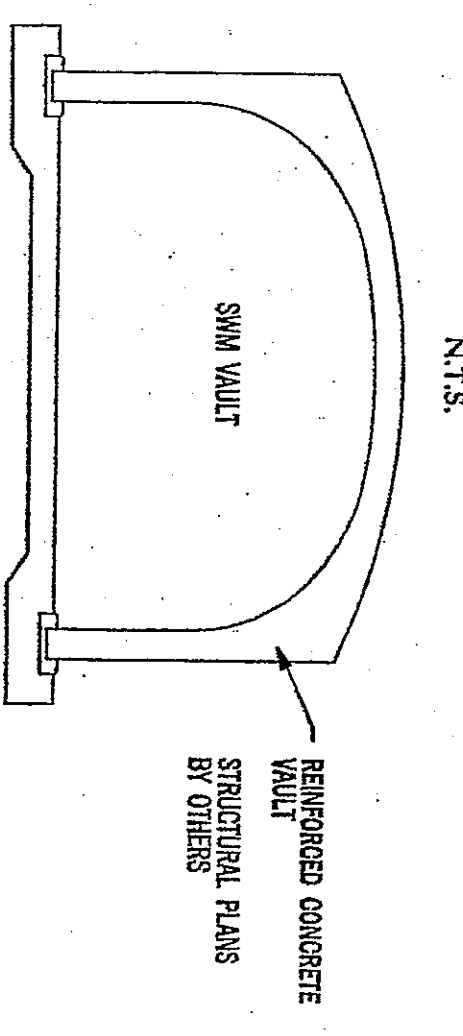
SWM VAULT - PLAN VIEW
N.T.S.



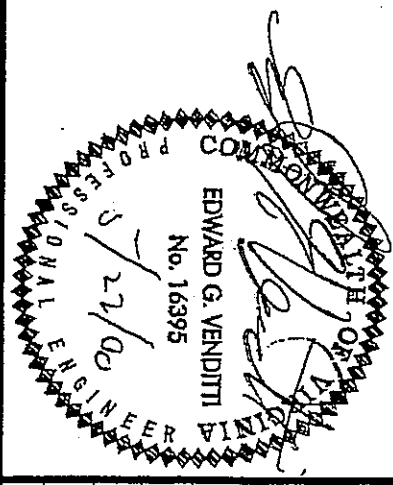
SWM VAULT - SECTION A-A
N.T.S.



SECTION B-B
N.T.S.



NOTE:
SHOP DRAWINGS SEALED BY A VA. PROFESSIONAL ENGINEER ARE REQUIRED TO BE SUBMITTED.



NO.	REVISION	DATE	BY



PLANNING • SITE ENGINEERING • TRANSPORTATION • ENVIRONMENTAL • SURVEYING/MAPPING
Greenhome & O'Mara, Inc.
11211 WAPLES MILL ROAD
FAIRFAX VIRGINIA 22030
(703)385-9800

ANNAPOLIS, MD • ARLINGTON, VA • FAIRFAX, VA • FREDERICKSBURG, VA • GREENSBORO, NC
MECHANICSVILLE, VA • RALEIGH, NC • ROCKVILLE, MD • TYLER, TX • WEST PALM BEACH, FL

STORM WATER MANAGEMENT - TR20 CALCULATIONS & DETAILS
METRO PLACE AT DUNN LORING
PARCEL 1 (PREVIOUSLY PARCEL C-1)
PROVIDENCE DISTRICT
FAIRFAX COUNTY, VIRGINIA

WVWY DESIGN	SCALE	AS NOTED
SJH	16 OF 35	
EV		
CHECKED		
DATE		
4/99		
PROJ. NO.		
5169ADE		
FILE NO.		
PP-805		